



Edwalton Primary School - part of the Flying High Academy Trust

Spring Term 2016—Newsletter Edition 1

Dear Parents/Carers,

Welcome Back

Welcome back and hopefully you will have had a restful, exciting break with your children and family. In various assemblies and in discussions around the school the children seem to have enjoyed their well-earned rest and look ready for the challenges of the New Year. I am conducting assemblies over the next week about setting personal and academic challenges for the next two terms. They all appear very happy to be back in school with their friends and teachers.

Children and staff will be reflecting upon targets and challenges in class and at home. We will all be thinking about what personal challenges we should set ourselves for the forthcoming year. This will be followed up by circle time and work this term.

Children will be asked to read in assembly their thoughts and reflections over the next week.

What challenges have you set your child /children and yourself?

Parents' Evenings

Please note the following dates for the next round of consultations and fix them into your electronic or paper diaries

Thursday 17th March—Parents' Evening 4-6pm

Wednesday 23rd March—Parents' Evening 4-6pm

Curriculum Year Group Letters

You should have received communication from your class teacher explaining the areas of work your child will be covering this term. Thank you for all your efforts in supporting the curriculum work of the school.

I have really enjoyed seeing the marvellous examples of our Creative Homework. Well done everyone who has contributed so far this academic year.

Access to the School Premises/Playground Games

Both last term and this week already we have received complaints regarding children being left unsupervised on the school premises from 8.15am. **Can I politely remind all our families that children should not arrive at school before 8.40am.**

Likewise after school, all children and parents should leave our premises by 3.45pm. We operate a significant number of clubs, interventions and activities and most families are great and supervise their children but we have been taking calls about some children not arriving home promptly during these early dusk times. This includes impromptu games on the unsupervised playground or astro-turf. **Please remind your children that they must all go home promptly if not staying on for a club or for tuition.**

We have clarified the terms of our insurance policy with the local authority and our personal liability and personal accident insurance does not cover any unauthorised or unsupervised activity on the premises out of school hours. You therefore need to understand that, as a school, we have no alternative but to write to you and comply with the term of our insurance policies like many other schools. Many of you work in schools and similar establishments and should understand the difficulty we have. Just as with the 'Dogs in the playground' issue, we have little flexibility.

Thank you for your continued support and understanding.

Late Gate

Many thanks to all the parents and carers who have made a conscious effort to get their children into school ready for a punctual start. This has received such positive comments especially from support staff who can start their literacy and numeracy interventions promptly and get the day off to a flying start.

Random Late Gates will also operate over the next few weeks.

CHANGE OF CONTACT DETAILS

It is imperative that you contact the office immediately if you change any of your emergency contact numbers and, if you are registered with Parentmail, that you update them with change of mobile numbers and email addresses. Thank you for your co-operation in this matter.

If you think you have signed up to Parentmail but are still not receiving emails please contact the office and we will investigate on your behalf.

If you received a new phone for Christmas please recycle the old phone with us—drop it off when you pop to give us your new number!



Parking

Parking appears on the whole, to be improving since the new parking signs and 20 mph signs have been installed and since we have urged that tickets for cars parked on the corners, pavements or over yellow lines have been issued.

Fewer drivers are coming down the cul-de-sac as the parking spaces are already taken by residents or staff cars. It is your collective voice that has forced most individuals to change as well as the measures mentioned above. Thank you.

Please do not hesitate to report to West Bridgford Police any instances of irresponsible parking or driving that threaten the safety of our children. Please don't ring to tell me as an email will suffice. It's up to you as individuals to take the responsibility—one day it might be your child that is hurt or seriously injured. Please report the car's make and the time of the incident and licence number.

Looking After the Animals over Christmas

A big thank you to everyone who gave up their time to help look after the animals over the Christmas holidays. The children were:- Elizabeth, George, Baktash, Kirsty, Kate, Matthew, Oliver, Ben, Oliver, Harry, Elliot, Freddie, Kyra, Josh and Sophia. It is much appreciated.

Thank you also to the children who have looked after the animals during the wintry weather this week.

It's been a challenging two weeks of rain and wind and rain. Well done everyone!



Reminder Music Tuition

Guitar, Keyboard and Woodwind Lessons start this week.

Guitar lessons — Tuesday and Friday

Keyboard lessons — Monday

Woodwind lessons—Friday

Drum lessons—Wednesday

Please ensure your child has their instrument and books in school on the appropriate day.

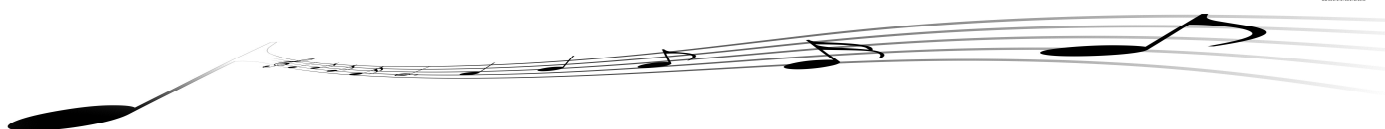
Swimming

Swimming starts again this Thursday for the **Year 4 and 5's** for the next 5 weeks. The last session will be on Thursday 4th February.

We are investigating the possibility of booster sessions for Year 6 children who can't quite swim 25 metres yet. The costs are high but I will let you know how we get on as soon as possible.

Flute lessons

Currently we have one space for Flute tuition. These lessons are held on a Friday during school. Lessons are taught by Mrs Reavley. We will need this place to be filled in order to offer these lessons. Flutes are available to hire or buy. Please contact the office for details.



Important Dates for your Diary

Thursday 14th January—Foundation Stage Phonics Workshop for parents 5-6pm

Monday 22nd February—Inset Day

Friday 4th March—World Book Day

Tuesday 8th March—Year 3/4 Production 'Hoodwink' (The tale of Robin Hood) - Dress Rehearsal @ 2pm

Wednesday 9th March—Year 3/4 Production 'Hoodwink' - Evening Performance @ 6.30pm

Thursday 10th March—Year 3/4 Production 'Hoodwink' - Evening Performance @ 6.30pm

Thursday 17th March—Parents' Evening 4-6pm

Friday 18th March—Parent Drop In

Wednesday 23rd March—Parents' Evening 4-6pm

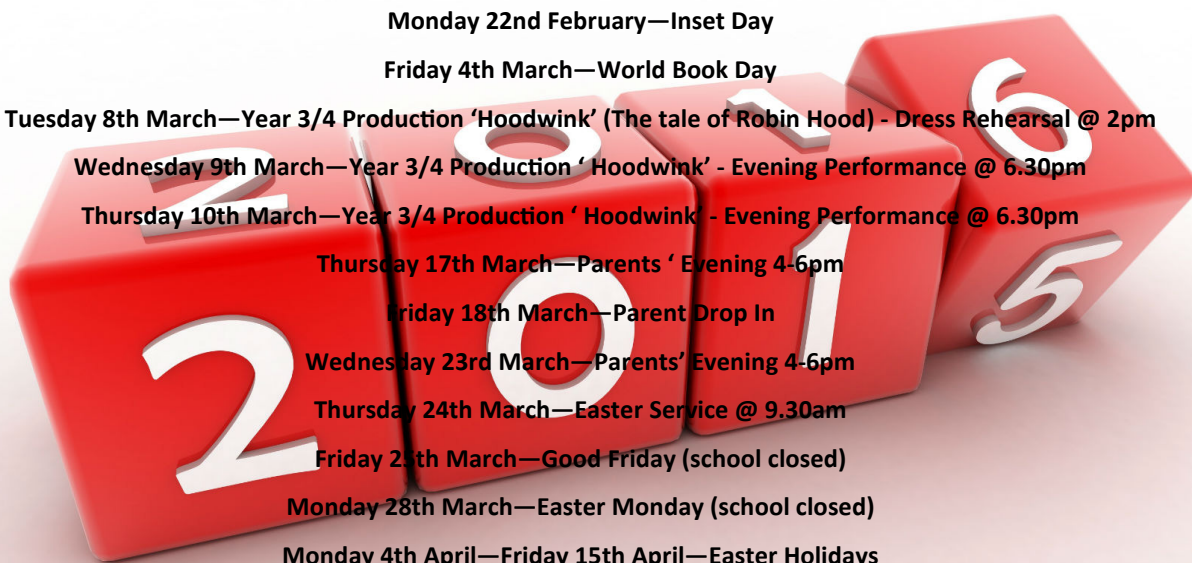
Thursday 24th March—Easter Service @ 9.30am

Friday 25th March—Good Friday (school closed)

Monday 28th March—Easter Monday (school closed)

Monday 4th April—Friday 15th April—Easter Holidays

Monday 18th April—School re-opens for Summer Term



Edwalton Clubs—Spring Term 16

Please find below details of clubs that are running this half term

	<u>Monday</u>	<u>Tuesday</u>	<u>Wednesday</u>	<u>Thursday</u>	<u>Friday</u>
<u>Before School</u>	Breakfast Club KS2 Funfit	Breakfast Club KS1 Fun Fit	Breakfast Club	Breakfast Club KS2 Fun Fit	Breakfast Club KS1 Fun Fit
<u>Lunchtime</u>		KS1 Choir	School Council Year 1 and Year 3 Recorder Club KS2 Maths Club	KS2 Choir	Year 2 and Year 3 Record- er Club
	Lego Club (we need an adult!!) Help and folks	Eco-Club		Girls Football— Year 5	Girls Football— Year 6
<u>After school</u>	Rattle & Roll on the Stage Dra- ma – Yr1-6	Dance Club		Creative Writing Club —Year 6 (more details to follow)	KS2 Fitness Club Year 5/6 Boys Football



INFORMATION FROM NOTTINGHAMSHIRE COUNTY COUNCIL

FREE SCHOOL MEALS

You may qualify for free school meals if your child attends a Nottinghamshire County Council School or your child attends a maintained nursery (as long as they are receiving funded early learning education before and after lunch) and you receive one of the following benefits:

- Child Tax Credit, provided they are not entitled to Working Tax Credit and have an annual income (as assessed by Her Majesty's Revenue & Customs (HMRC)) that does not exceed £16,190
- Income Support
- Income-based Jobseeker's Allowance (JSA)
- Income-related Employment and Support Allowance (ESA)
- Income-based and Contributions-based JSA and ESA on an equal basis
- Support under Part VI of the Immigration and Asylum Act 1999
- The Guarantee element of State Pension Credit
- Working Tax Credit run-on – paid for four weeks after the person stops qualifying for Working Tax Credit
- Universal Credit – during the initial roll-out of the benefit

HOW TO REGISTER & APPLY

The Nottinghamshire County Council Citizen Portal is now live for free school meals.

Parents will now be able to register and apply for free school meals for Nottinghamshire schools through our public website and receive an immediate decision regarding their entitlement. This will then be confirmed by email to the parent. If parents are already authorised to receive free school meals there is no need for parents to reapply.

If you wish to apply for free school meals, please go to the public website to complete your application. Right click on the link below to open this hyperlink.

https://emsonline.nottsc.gov.uk/CitizenPortal_LIVE/Account/Login?ReturnUrl=%2fCitizenPortal_LIVE

Your Child May be Entitled to Free Milk at School

School milk is now available to all pupils through our school milk provider, Cool Milk. Children under 5 receive milk free of charge, paid for by the UK government.

If your child is over 5 and you receive state benefits (see list below), your child may be entitled to free school milk, paid for by the school. If you think you are eligible, please inform the school office, and they will register your child to receive their free milk.

Your child may be able to get free school meals and free school milk if you get any of the following:

- Income Support
- income-based Jobseekers Allowance
- income-related Employment and Support Allowance
- support under Part VI of the Immigration and Asylum Act 1999
- the guaranteed element of State Pension Credit
- Child Tax Credit (provided you're not also entitled to Working Tax Credit and have an annual gross income of no more than £16,190)
- Working Tax Credit run-on - paid for 4 weeks after you stop qualifying for Working Tax Credit
- Universal Credit

If your child is over 5 but you don't receive state benefits then milk is still available at a subsidised rate – just go to www.coolmilk.com to register and pay.

A portion of fresh, chilled milk at mid-morning break provides protein, calcium and other vital nutrients, important for your child's growth and development. It's also a great way to bridge the gap between breakfast and lunch, re-hydrating your child and helping them to concentrate in class

Bits and Bobs

School Meals

School Dinners cost £2.15 per day, £10.75 for the week or £60.20 for this half term.

Please top up your squid account. If you need a reminder of your current balance or squid account number please contact the office.

Reminder Music Tuition

Guitar, Keyboard and Woodwind Lessons start this week.

Guitar lessons — Tuesday and Friday

Keyboard lessons — Monday

Woodwind lessons—Friday

Drum lessons—Wednesday

Please ensure your child has their instrument and books in school on the appropriate day.

Flute lessons

Currently we have one spaces for Flute tuition. These lessons are held on a Friday during school. Lessons are taught by Mrs Reavley. We will need both places to be filled in order to offer these lessons.

Flutes are available to hire or buy. Please contact the office for details

